

Unified Planning Work Program

FY 2012
FINAL

Adopted June 29, 2011
Amended October 20, 2011

This document is subject to amendment
by the action of the Policy Committee

Southeast Wiregrass Area MPO

Unified Planning Work Program (UPWP) for the Dothan Urbanized Area

FY 2012

This document is posted on the Internet at
www.dothan.org

For information regarding this document, please contact
Ms. Nicole Spivey, Transportation Planner
City of Dothan
126 N. Saint Andrews,
Dothan, AL 36303
334-615-4414 Office
334-615-4419 Fax
Email: nspivey@dothan.org

This report was prepared as a cooperative effort of the U.S. Department of Transportation (USDOT), Federal Highway Administration (FHWA), Alabama Department of Transportation (ALDOT), and the City of Dothan Department of Planning and Development as a requirement of amended Title 23 USC 134(SAFETEA-LU Section 6001 August 2005). The contents of this document do not necessarily reflect the official views or policy of the U. S. Department of Transportation.

**Southeast Wiregrass Area
Metropolitan Planning Organization (MPO)
Policy Committee Members**

Voting MPO Members

Mayor Mike Schmitz, **MPO Chairman**
City of Dothan

Mr. John Craig
City of Dothan Commission

Mr. Amos Newsome
City of Dothan Commission

Mayor Rusty Burgess
Town of Ashford

Mayor Randy Roland
Town of Cowarts

Mayor Frankie Adkins
Town of Grimes

Mayor Ray Marler
Town of Headland

Mayor Jason Reneau
Town of Kinsey

Mayor Virgil Skipper
Town of Midland City

Mayor Greg Ballard
Town of Napier Field

Mayor Fred McNab
Town of Pinckard

Mayor Joe Collins
Town of Rehobeth

Mayor Joel H. Napier
Town of Taylor

Mayor Vicky Hunter
Town of Webb

Honorable Eunice Hagler
Dale County

Honorable JoAnn Smith
Henry County

Mr. Mark Culver, **MPO Vice Chairman**
Houston County Commission, Chairman

Mr. Jackie Battles
Houston County Commission

Mr. Mike Griffin
Seventh Division Engineer
Alabama Department of Transportation

MPO Policy cont'd

Non-Voting MPO Members

Mr. David Harris
Federal Highway Administration

Mr. Robert J. Jilla
Bureau Chief
Transportation Planning and Modal Programs, ALDOT

Mr. Thomas Solomon
Executive Director
Southeast Alabama Regional Planning &
Development Commission

Southeast Wiregrass Area MPO Staff

Mr. Todd McDonald, AICP
Director of Planning and Development
City of Dothan

Ms. Nicole Spivey, **MPO Secretary**
Transportation Planner
City of Dothan

Mr. Charles Metzger
Assistant Public Works Director
City of Dothan

Southeast Wiregrass Area
Metropolitan Planning Organization (MPO)
Technical Advisory Committee (TAC) Members

Mark Nall AAA Cab Co. P.O. Box 871 Dothan, AL 36302-0871	Scott Farmer SEARPDC P.O. Box 1406 Dothan, AL 36302-1406
Jimmy Barkley AAA Cooper Transportation Co. P.O. Box 6827 Dothan, AL 36302-6827	G. C. Harris, Chairman Dothan Planning Commission P.O. Box 1325 Dothan, AL 36302
Kenneth Whaley Alabama Department of Transportation P.O. Box 1609 Dothan, AL 36302-1609	Charles Peters Peters Municipal Associates P.O. Box 6526 Dothan, AL 36302-6523
Mark Pool Houston County Engineer 2400 Columbia Highway Dothan, AL 36303	Matt Parker Dothan Area Chamber of Commerce P.O. Box 638 Dothan, AL 36302-0638
Chris Champion Henry County Engineer 1023 County Road 53 Abbeville, AL 36310	Wiley Brooks, Sr. Transportation Planner (Eric Marable) Multimodal Transportation Bureau- ALDOT 1100 John Overton Drive Montgomery, AL 36110
Tim Hornsby Pre-Construction Engineer Alabama Department of Transportation P.O. Box 647 Troy, AL 36081-0647	John Sorrell Wiregrass Transit Authority P.O. Box 1406 Dothan, AL 36302
Art Morris Dothan-Houston County Airport Authority, Inc. 800 Airport Drive Suite 15 Dothan, AL 36303	Jerry Corbin, Public Works Director City of Dothan P. O. Box 2128 Dothan, AL 36302
Will Adams Design Bureau 1409 Coliseum Boulevard Montgomery, AL 36110-3050	Todd McDonald, Planning Director City of Dothan P. O. Box 2128 Dothan, AL 36302
Emmanuel C. Oranika, PhD Metropolitan Planning Transportation Administrator 1409 Coliseum Boulevard Alabama Department of Transportation	Nicole Spivey, Transportation Planner City of Dothan Dothan, AL 36302

Charles Metzger Assistant Public Works Director City of Dothan P. O. Box 2128 Dothan, AL 36302	Joshua Knight Dale County 202 S. Hwy. 123 Suite A Ozark, AL 36360 Dothan, AL 36304
Ernest Stokes, Chief Civil Engineer City of Dothan P. O. Box 2128 Dothan, AL 36302	Cornell Tatum ALDOT Title VI Compliance 1409 Coliseum Blvd Montgomery, AL 36110
Allan Kramer, Civil Engineer City of Dothan P. O. Box 2128 Dothan, AL 36302	Cornelia Sanders Assistant County Engineer 202 S. Hwy. 123 Suite A Ozark, AL 36360
Robert Cox, Assistant Traffic Engineer City of Dothan 207 Complex Dr. Suite 1 Dothan, AL 36301	Scott Trott CDG Engineering 1840 Hartford Hwy Dothan, AL 36301
Myer Holloway Houston County Road and Bridge Dept 2400 Columbia Highway Dothan, AL 36303	Jason Singletary City of Headland 9 Park Street Headland, AL 36345-0036
Justin Barfield Houston County Road and Bridge Dept 2400 Columbia Highway Dothan, AL 36303	Bryan Alloway Town of Midland City P.O. Box 69 Midland City, AL 36350-0069
Derek Brewer Dale County Engineer 202 S. Hwy. 123 Suite A Ozark, AL 36360	Stephanie James ALDOT Title VI Compliance 1409 Coliseum Blvd Montgomery, AL 36610
	Robert Cox City of Dothan P.O. Box 2128 Dothan, AL 36302

**SOUTHEAST WIREGRASS AREA
METROPOLITAN PLANNING ORGANIZATION**

RESOLUTION NO. 06-29-2011 FY 2012 UPWP

**Adopting the FY2012 Unified Planning Work Program
for the Dothan Urbanized Area**

WHEREAS, the Southeast Wiregrass Area Metropolitan Planning Organization (MPO) is the organization designated by the Governor of the State of Alabama as being responsible, together with the State of Alabama, for implementing the applicable provisions of 23 USC 134, 135; 42 USC 7410 et seq.; 49 USC 5303, 5304; SAFETEA-LU (Pub. L. 109-59, August 2005), et al.; 23 CFR Parts 450 and 500; 40 CFR Parts 51 and 93; 49 CFR Parts 1.48, 1.51, and 613; and,

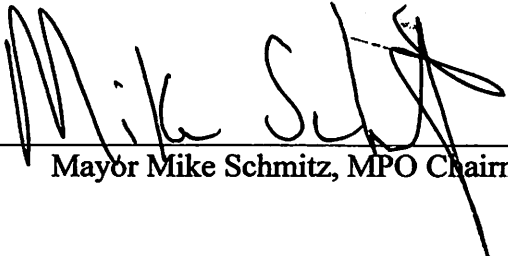
WHEREAS, the U. S. Department of Transportation requires all urbanized areas, as established by the U. S. Bureau of the Census, doing area-wide urban transportation planning that involves more than one Department of Transportation operating administration, to submit a Unified Planning Work Program as a condition for meeting the provisions of Title 23, U. S. Code, Section 134; and,

WHEREAS, consistent with the declaration of these provisions, the Southeast Wiregrass Area Metropolitan Planning Organization (MPO), in cooperation with the Alabama Department of Transportation, has prepared a Unified Planning Work Program for the Dothan Urbanized Area for Fiscal Year 2012; and,

WHEREAS, pursuant to its duties, functions, and responsibilities, the Southeast Wiregrass Area Metropolitan Planning Organization (MPO), in session this 29th day of June, 2011, did review and evaluate the aforementioned Unified Planning Work Program, summarized on the attached pages; now,

THEREFORE, BE IT RESOLVED by the Southeast Wiregrass Area Metropolitan Planning Organization (MPO) that the same does hereby endorse and adopt said Unified Planning Work Program.

ADOPTED this 29th day of June 2011.



Mayor Mike Schmitz, MPO Chairman

ATTEST:



Nicole Spivey, MPO Secretary

Table of Contents

Southeast Wiregrass Area MPO Contact	ii
Southeast Wiregrass Area Member (Policy and TAC).....	iii
RESOLUTION	vii
I. Introduction.....	1
II. Organization	2
III. Task	3
1.0 Administration.....	3
1.1 Continuity of Operations Plan (COOP).....	5
2.0 Data Collection and Analysis	7
2.1 Database maintenance and Data collection	7
2.2 Geographic Information Systems (GIS).....	9
2.3 Traffic Analysis Zones, Traffic Models, and Traffic Count Inventories	11
2.4 Preparation of Emissions Data for MOVES 2010	13
2.5 Intelligent Transportation System (ITS) Plan	14
3.0 UPWP.....	15
4.0 Public Involvement.....	17
4.1 Public Participation Process (PPP) Plan	17
4.2 Title VI and Environmental Justice	19
4.3 Disadvantaged Business Enterprise (DBE)	21
4.3.1 Transportation Disadvantaged Planning	23
4.4 Public Involvement for Air Quality Conformity	24
5.0 Environmental Mitigation and Streamlining	25
5.1 Air Quality.....	25
5.2 Climate Change and Green House Gases	27
6.0 Transportation Systems	28
6.1 Long Range Transportation Plan (LRTP).....	28
6.1.1 Air Quality Conformity Report	30
6.1.2 Amend Long Range Project Listing for Air Quality Conformity	31
6.2 Transportation Improvement Program (TIP).....	32
6.2.1 Amend FY 2011-15 TIP Protect Listing for Air Quality Conformity	34
6.3 Public Transportation	35
6.3.1 Private Enterprise Participation	37
6.4 Bicycle/Pedestrian Trans Planning	39
6.5 Congestion Management Process	41
6.6 Freight Planning	43
7.0 Transportation Safety	44
8.0 Education and Training	45
9.0 Special Projects, Corridor Development, and Developments of Regional Impact (DRI).....	47
<i>Appendices</i>	49
Appendix A Southeast Wiregrass Area MPO Study Area.....	50
Appendix B MPO Organizational Chart.....	51
Appendix C Public Participation Plan	51
Appendix C Public Participation Plan	52
Appendix D Abbreviations and Acronyms.....	59
Appendix E Financial Constraint Data, Tables, and Reports	60

I. Introduction

Overview

The Unified Planning Work Program (UPWP) document is developed to organize the planning activities for the Southeast Wiregrass Area Metropolitan Planning Organization (MPO). The purpose of the UPWP is to define work tasks necessary to conduct transportation planning activities throughout the Southeast Wiregrass Area MPO. The UPWP also outlines budget allocations for each work task covering Fiscal Year 2012, from October 1, 2011 to September 30, 2012.

Both federal and local funding sources are outlined in the UPWP. Planning Funds (PL) from the Federal Highway Administration (FHWA) and Federal Transit Administration (FTA) account for eighty (80%) of the MPO's funding source, while the remaining twenty (20%) is made up of local funds.

Public Participation in the Transportation Planning Process

The Southeast Wiregrass Area Metropolitan Planning Organization (MPO) strongly encourages public participation of MPO Transportation Planning activities. All MPO activities and meetings are open to the public. Advertisement of planning activities, such as meeting dates, review/adoption of planning documents and public involvement sessions are publicized at least 2 weeks prior to the meeting date. In continuing open participation, the Technical Advisory Committee (TAC) and Policy Committee review and provide comments on all MPO planning documents. The public is encouraged to contact MPO staff with any questions or concerns. Staff may be contacted via phone, email and/or in person to discuss all MPO planning activities and documents.

SAFETEA-LU

When developing the Southeast Wiregrass Area UPWP, specified requirements of the Safe, Accountable, Flexible, Efficient, and Transportation Equity Act: A Legacy for Users (SAFETEA-LU) legislation shall provide for consideration of projects and strategies that will:

1. Support the economic vitality of the metropolitan area, especially by enabling global competitiveness, productivity, and efficiency;
2. Increase the safety of the transportation system for motorized and non-motorized users;
3. Increase the security of the transportation system for motorized and non-motorized users;
4. Increase the accessibility and mobility options available to people and for freight;

5. Protect and enhance the environment, promote energy conservation, improve quality of life, and promote consistency between transportation improvements and State and local planned growth and economic development patterns;
6. Enhance the integration and connectivity of the transportation system, across and between modes, for people and freight;

II. Organization

The Southeast Wiregrass Area MPO is composed of three distinctive committees; Policy Committee, Technical Advisory Committee and Citizens Advisory Committee.

The Policy Committee is the policy and decision-making board, which includes voting and non-voting MPO members. Policy Committee members are the chief elected officials (Mayors and County Commissions members) of the local government jurisdictions. The Policy Committee discusses, adopts and submits projects to the Alabama Department of Transportation (ALDOT).

The Technical Advisory Committee (TAC) provides technical support to the Policy Committee. TAC members are non-elected officials, who based on their affiliation, have a hand in developing transportation infrastructure and/or operating transportation dependent businesses.

The Citizen Advisory Committee (CAC) was established to provide input into the public involvement process. Each MPO member is charged with appointing one representative (Houston County and the City of Dothan have two). The chair of the CAC is a non-voting member of the TAC.

III. Task

1.0 Administration

Objectives

Administer and manage the transportation planning program in an efficient manner and effectively use human and material resources in developing a transportation plan. Ensure compliance with Title VI. Provide necessary secretarial and clerical services. Assure compliance with the U.S. DOT drug-free work place requirements. Make necessary preparations for TAC and MPO meetings as well as Public Involvement events. Provide MPO, TAC and other interested parties with minutes and other information. Maintain records as required by FHWA and ALDOT. Prepare reports as required.

Previous Work

The City of Dothan staff, serving as the MPO staff, has managed the transportation planning program during previous years. The City of Dothan, which serves as the MPO planning agency, maintains a drug-free work place program.

Proposed Work

Appropriate management and administrative activities will be carried out, including providing timely reports to various committees and member government agencies. Changes necessary to comply with new legislation will be made. Records and information will be maintained and made available to the public in order to foster public participation in and confidence in the transportation planning program.

- Administer all MPO documents in accordance with the 3-C process
- Maintain Title VI compliance and Federal drug-free work place requirements
- Provide administrative support to all MPO proceedings
- Provide MPO Policy/TAC/Citizens Advisory Committees with appropriate information
- Maintain accurate minutes and records of MPO proceedings

Product

Well-managed transportation planning program that complies with applicable provisions of federal legislation.

Staffing

The City of Dothan, MPO Staff

Schedule

None

Funding Responsibility

Total Cost	\$93,750
PL	\$75,000
Local	\$18,750

1.1 Continuity of Operations Plan (COOP)

Objectives

The purpose of the Continuity of Operations Plan (COOP) is to provide direction in the event of an emergency or disaster. The COOP outlines the measures to be taken by local agencies and safety officials such as local police and the Sheriff Department in the event of an emergency.

Previous Work

MPO staff has participated in Emergency Preparedness Workshops. Proposed subdivisions and other developments are reviewed by MPO staff and Dothan Planning Commission to assure that access can be maintained in the event of disaster. MPO staff assisted MPO member governments in identifying and qualifying potential safety projects for H.E.S. funding.

The City of Dothan cooperated with other municipalities, Houston, Henry, Barbour and Russell Counties, ALDOT, ADECA, the Alabama Highway Patrol, area emergency management agencies and the Southeast Alabama Medical Center in targeted projects to improve safety on U.S. Highway 431 by more aggressive law enforcement, identification and correction of unsafe roadway conditions, and improved emergency response.

A Continuity of Operations Plan (C.O.O.P) was developed and implemented in FY 2005.

Proposed Work

The MPO will continue to work with local law enforcement agencies and other safety officials, including the local police and sheriff and traffic engineers, to evaluate to ensure a high level of safety for all road users in the event of a disaster.

- Analyze accident data
- Attend workshops and trainings
- Promote safe driving awareness

Products

Reports that identify planned and existing roads to be used in the event of a disaster. The Continuity of Operations Plan will be incorporated into the general emergency preparedness program for the City of Dothan. The maintenance of a Continuity of Operations Plan is a part of the City of Dothan's Emergency Preparedness Program.

Staffing

The City of Dothan

Schedule

None

Funding Responsibility

Total Cost	\$6,250
PL	\$5,000
Local	\$1,250

2.0 Data Collection and Analysis

2.1 Database maintenance and Data collection

Objectives

Collect and maintain data to support the transportation planning program and evaluate the effectiveness of the transportation planning program and the transportation system; assist in the evaluation of potential developments and activities on the transportation system; and assist in the determination of measures to be taken to mitigate impacts on the transportation system. Improve capability of member governments to monitor and analyze traffic and accident data.

Data to be collected, maintained and analyzed includes: socioeconomic characteristics, traffic volumes, land use, economic activity, employment, physical attributes of the transportation system, accident data and land parcel data from each county included in the MPO Study Area (Dale, Henry and Houston Counties).

Previous Work

Socioeconomic data extracted from census information, building permit records, and employment reports were allocated to the appropriate TAZs. The City of Dothan Traffic Services Division collected and maintained traffic and accident data, which have been used to optimize signal timing and improve the safety of intersections. ALDOT conducted ongoing traffic counting programs. The City of Dothan initiated and continued a computer assisted pavement management system. Additional traffic counters have been acquired. With local funds, the City of Dothan bought traffic system data management software to evaluate the operation of intersections and to evaluate possible improvements to intersection and facilities.

Proposed Work

The MPO will maintain an ongoing local traffic-counting program to augment traffic data collected by ALDOT. This task will include procuring traffic counting devices to be used in local counting programs. In addition, the data required for a sign and signal system inventory and maintenance program will be collected. Socioeconomic data will continue to be updated by MPO staff for use in modeling and plan update activities. The MPO and ALDOT will continue counting and monitoring activities. Data developed by the MPO will be made available to MPO members, local planning agencies and the general public as requested. Counters/classifiers will be purchased to support the City of Dothan's traffic counting program.

- Collection of Socioeconomic Data
- Collection and Analysis of Traffic Data
- Purchase of Land Parcel Data of the counties included in the MPO Study Area in the amount of \$5,000.00.

Product

An ongoing program providing accurate and timely data to support the transportation planning program and to evaluate and optimize the operation of the transportation system.

Staffing

Metropolitan Planning Section (ALDOT); City of Dothan

Schedule

None

Funding Responsibility

Total Cost	\$12,500
PL	\$10,000
Local	\$2,500

2.2 Geographic Information Systems (GIS)

Objectives

Continue the integration of the MPO transportation planning program and the City of Dothan's GIS database. Train MPO staff in new traffic modeling and GIS software. Develop small area traffic modeling capability to evaluate potential impact of proposed developments on the transportation network.

Previous Work

The MPO staff used traffic modeling software to support the previous update of the Long Range Transportation Plan. GIS and CAD software systems have been used by MPO staff to support design of extensions, widening projects, proposed intersection improvements and other MPO projects. Staff and the consultant on the Fixed Route Transit Feasibility Study also used GIS for map production. The City of Dothan maintains GIS software and maps on MPO staff computers. The City of Dothan collaborated with Houston County to provide additional funding to assure that aerial photography would be of sufficient detail and accuracy to be used in the City's GIS database. The City of Dothan and Houston County continues to collaborate to provide GIS information to consultants for use in preparing updates to the Long Range Transportation Plan.

Proposed Work

City of Dothan will continue to upgrade computers and GIS software as needed to assure MPO staff and other City staff can readily access GIS data. Transportation related data will be integrated into GIS. Technical assistance will be made available to all MPO members. The MPO staff will continue to take advantage of available training opportunities to develop and maintain traffic demand modeling capabilities.

- Update Model Network
- Administer updates to Model Network
- Attend Modeling and GIS workshops/trainings
- Create maps to identify MPO project location(s)
- Employ GIS software to display and analysis MPO study area
- Utilize TRAN/PLAN to display project additions and traffic pattern changes
- Utilize GIS to display proposed Bicycle and Pedestrian routes

Products

Improved capability to evaluate impacts of population and development changes on transportation system. Improved ability to make preliminary evaluations of possible system improvements. Accurate maps showing location of rights-of-way, pavement

widths, utilities, land use and other information. Revised maps and information as needed. Ability to model transportation system in order to evaluate proposed improvements as part of a revised transportation plan and to evaluate impacts of proposed developments on transportation system. More complete integration of transportation planning and GIS programs.

Staffing

The City of Dothan

Schedule

None

Funding Responsibility

Total Cost	\$12,500
PL	\$10,000
Local	\$2,500

2.3 Traffic Analysis Zones, Traffic Models, and Traffic Count Inventories

Objectives

Collect and maintain data to support the current traffic model. Coordinate with ALDOT to ensure accurate TAZ boundaries. In an effort to enhance local traffic counting capabilities, the MPO will purchase traffic counters and count stations to allow staff to receive current traffic volumes throughout the urban areas.

Previous Work

The City of Dothan Traffic Services Division collected and maintained traffic and accident data, which have been used to optimize signal timing and improve the safety of intersections. ALDOT conducted ongoing traffic counting programs. The City of Dothan initiated and continued a computer assisted pavement management system. Additional traffic counters have been acquired. With local funds, the City of Dothan bought traffic system data management software to evaluate the operation of intersections and to evaluate possible improvements to intersection and facilities.

Proposed Work

The MPO will maintain an ongoing local traffic-counting program to augment traffic data collected by ALDOT. This task will include procuring traffic counting devices to be used in local counting programs. In addition, the data required for a sign and signal system inventory and maintenance program will be collected. Data developed by the MPO will be made available to MPO members, local planning agencies and the general public as requested.

Counters/classifiers will be purchased to support the City of Dothan's traffic counting program.

- Collection and Analyze Traffic Data
- Update Model Network
- Purchase of Traffic Counters and related equipment to perform traffic studies/counts within the Southeast Wiregrass MPO Study Area in the amount of \$75,000
- Purchase Socioeconomic Data to input in the CUBE/Voyager Modeling Software in the amount of \$3,000.00

Product

An ongoing program providing accurate and timely data to support the transportation planning program and to evaluate and optimize the operation of the transportation system.

Staffing

Metropolitan Planning Section (ALDOT), consultant; City of Dothan

Schedule

None

Funding Responsibility

Total Cost	\$81,250
PL	\$65,000
Local	\$16,250

2.4 Preparation of Emissions Data for MOVES

Objectives

To monitor and input required emissions data in the Environmental Protection Agency (EPA) MOVES (Motor Vehicle Emission Simulator) software.

Previous Work

No work has been previously required

Proposed Work

If Dothan becomes a non-attainment area

- Attend MOVES trainings
- With pollutant budgets provided by the SIP, will do pollutant estimates using the MOVES software

Product

Accurate emissions estimates for use in demonstrating conformity.

Staffing

Metropolitan Planning Section (ALDOT), City of Dothan, and the MPO

Schedule

The conformity demonstration activity timeline will be established with the NAAQS announcement of new standards and county designation of non-conformity status.

Funding Responsibility

Total Cost	\$12,500
PL	\$10,000
Local	\$2,500

2.5 Intelligent Transportation System (ITS) Plan

Objectives

Develop an Intelligent Transportation System (ITS) Plan for the Dothan Urban Area. Work with a consultant and other appropriate agencies to promote the Safe Routes to School Program.

Previous Work

City of Dothan staff has request and received concurrence from ALDOT to initiate as well as engage in the consultant selection process to provide professional services for the development of an Intelligent Transportation System (ITS) Plan for the City of Dothan and Urban Area.

Proposed Work

- Initiate and implement an ITS Plan
- Select a consultant to develop the ITS Plan within the Southeast Wiregrass MPO Study Area in the amount of \$50,000
- Research future projects and funding sources

Product

Implementation of an ITS that will improve traffic management, incidents response, coordination of emergency management, dissemination of basic traveler information during incidents and general data collection.

Staffing

City of Dothan, ALDOT, and a consultant

Schedule

Intelligent Transportation System (ITS) Plan completion date is scheduled for the fall of 2011.

Funding Responsibility

Total Cost	\$62,500
PL	\$50,000
Local	\$12,500

3.0 UPWP

Objective

Develop a schedule of transportation planning tasks that will carry out the continuing, cooperative, and comprehensive (3-C) planning process. Create a budget to support these tasks with approval of the UPWP by the MPO and Advisory Committees and address Planning Factors, as mandated by Federal legislation and Federal agency directives. Establish bench marks and time lines where appropriate to enable MPO, ALDOT and FHWA to measure progress on time-sensitive activities.

Previous Work

Unified Planning Work Programs have been developed annually with particular interest being paid to identified Planning Factors. The FY 2011 UPWP was adopted by the MPO Policy Committee at the September 2010 MPO Meeting.

Proposed Work

In cooperation with ALDOT, FHWA and the TAC, the MPO staff will determine the needed planning activities (tasks) for FY 2012. These activities, along with funding levels and funding sources, will be incorporated into the FY 2012 Unified Planning Work Program. The UPWP will continue to reflect the requirements of federal transportation legislation.

The draft of the FY 2012 Unified Planning Work Program will be provided to ALDOT and FHWA by June 15, 2011. The final approved UPWP shall be adopted by the MPO no later than the Fall of 2011.

- Manage updates to the Transportation Improvement Plan
- Research opportunities for future project(s)
- Provide Draft/Final FY 2012 Unified Planning Work Plan to ALDOT

Product

A UPWP document that describes and identifies funding sources and responsibilities for the transportation planning activities for Fiscal Year 2012, including budgeting, time lines and benchmarks as appropriate.

Staffing

Metropolitan Planning Section (ALDOT) and the City of Dothan

Schedule

Annual Draft to ALDOT on June 15th. Following comments, Final will be adopted by the end of the fiscal year.

Funding Responsibility

Total Cost	\$50,000
PL	\$40,000
Local	\$10,000

4.0 Public Involvement

4.1 Public Participation Process (PPP) Plan

Objective

Provide information about the transportation planning program to interested individuals and groups. Make available an opportunity for the public to participate effectively in the transportation planning program. Coordinate the exchange of information between the MPO, the TAC, the Citizen Advisory Committee, ALDOT, and the FTA. Plan and conduct MPO and TAC meetings. Provide MPO and TAC members and public with information about ongoing planning activities. Represent MPO on various boards, including the Surface Transportation Committee of the Dothan Area Chamber of Commerce. Provide periodic reports on the status of MPO projects. Promote development of major transportation projects in Southeast Alabama. Maintain internet website. Maintain effective relationships with local and area print and broadcast media.

Previous Work

MPO staff members have appeared on local television to discuss MPO programs and have provided interviews to local print and broadcast media. Staff has scheduled and conducted MPO and TAC meetings and provided agendas, minutes, and other materials to MPO, TAC, and media. MPO held public involvement meetings to solicit comments from citizens. MPO staff continued to serve on the Dothan Area Chamber of Commerce Surface Transportation Committee. The MPO developed and adopted a Public Participation and Environmental Justice Plan on March 11, 2008 to incorporate measures of effectiveness. Attended public meetings with ALDOT officials concerning the proposed interstate connector, served as speakers at the Wiregrass Leadership and staff provide information to the local legislative delegation.

Proposed Work

The MPO will continue to make presentations to a variety of organizations. Public participation activities will be evaluated to determine their relative effectiveness. Advertising and other public notice methods will be evaluated to ascertain their cost efficiency and effectiveness in providing information to various segments of the area population. The Citizens Advisory Committee will work with the Technical Advisory Committee to advise the MPO. MPO will continue to develop and provide maps, reports, and other materials to inform citizens about the transportation planning program. The MPO will serve as a clearinghouse and “repository” for area-wide transportation projects information.

- Conduct four (4) MPO/TAC/Citizen Advisory Meeting in the fiscal year

- Organize a Citizen Advisory Committee
- Post FY 11 MPO meeting information on the City of Dothan website
- Post updated Transportation Planning documents on the City of Dothan webpage

Product

A cost efficient and effective program to coordinate MPO and TAC activities and to disseminate information on the transportation planning program, involve the public in the transportation planning program, and provide local officials with information needed to work with ALDOT and FHWA to advance projects.

Staffing

Metropolitan Planning Section (ALDOT) and the City of Dothan

Schedule

ALDOT has advised to delay the scheduled PPP update until after new legislation is approved

Funding Responsibility

Total Cost	\$10,625
PL	\$8,500
Local	\$2,125

4.2 Title VI and Environmental Justice

Objectives

Avoid, minimize, or mitigate disproportionately high and adverse human health and environmental effects, including social and economic effects, on minority populations and low-income populations. Ensure the full and fair participation by all potentially affected communities in the transportation decision-making process. Prevent the denial of, reduction in or significant delay in the receipt of benefits of transportation system improvements by minority and low-income populations. Develop effective relationships with representatives among low-income and minority communities. Promote and accommodate public participation in all areas of transportation planning decision-making. Develop and maintain a public involvement program that includes effective outreach to minority and low-income portions of the area population.

Previous Work

MPO staff attended Environmental Justice workshops. In response to FHWA comments, the Public Participation and Environmental Justice was approved and adopted by the MPO on March 11, 2008.

Proposed Work

MPO staff will determine residential, employment and transportation patterns of low-income and minority populations using census information and data from SEARPDC's public transit division. Identify community leaders representing low-income and minority populations by consulting with the Public Housing Authority, the Area Agency on Aging, local churches and other agencies that represent minority and low-income populations. Encourage the media, including TV, radio, and print, to disseminate information about transportation planning activities. Hold public meetings in locations that are comfortable, familiar, and convenient. Schedule meetings at times that are convenient for residents, including holding meetings on successive days and/or at different times.

- Complete compliance of the Environmental Justice document
- Complete compliance of Title VI Policies
- Continued posting of public meetings

Products

Maps and other references, including census data, will be used to identify low-income and minority residential concentrations for making transportation decisions to ensure the residents in these areas are not adversely affected. A mailing and phone list of contacts

will be developed to invite participation by low-income and minority populations. Develop news reports and public service announcements by the media that will heighten the likelihood of a broad range of public participation.

Staffing

The City of Dothan

Schedule

None

Funding Responsibility

Total Cost	\$11,875
PL	\$9,500
Local	\$2,375

4.3 Disadvantaged Business Enterprise (DBE)

Objectives

Give full consideration to the potential services that can be provided by disadvantaged business enterprises in carrying out the continuing, cooperative and comprehensive (3-C) planning process and any transit related programs. Meet requirements of 23 USC 134(c) (3) and 49 CFR 23.

Previous Work

ALDOT maintains rosters of qualified DBE firms, which are available on-line to the MPO. ALDOT has provided DBE workshop opportunities, which have been attended by the MPO staff. The MPO staff provided information to the Southeast Alabama Transit System to assist that organization in its effort to identify qualified DBE firms for a possible feasibility study. The MPO planning staff has corresponded with DBE providers of certain products and services including soliciting bids from DBE suppliers for computers, peripheral equipment, and software.

Proposed Work

ALDOT will monitor the planning agency and the City of Dothan in its efforts to contract with DBE enterprises. ALDOT will provide DBE services to assist the MPO in meeting the DBE goals.

- Attend DBE workshops when available
- Utilize DBE firms resources when appropriate

Product

A program that promotes the use of DBE and contractors' services in an effort to meet a prescribed goal of contracting with DBEs.

Staffing

Metropolitan Planning Section (ALDOT) and the City of Dothan

Schedule

None

Funding Responsibility

Total Cost	\$4,375
PL	\$3,500
Local	\$875

4.3.1 Transportation Disadvantaged Planning

Objectives

Identify transportation-disadvantaged populations and their travel needs, and monitor the activities of the Dothan Urbanized Area Transportation Disadvantaged Program. Provide support for the Southeast Alabama Regional Development & Planning Commission (SEARP&DC) on the development of the Human Services Transportation Plan.

Previous Work

The Southeast Wiregrass Area MPO maintains communication with Southeast Alabama Regional Development & Planning Commission (SEARP&DC). The MPO staff provides both technical and socioeconomic data to the Wiregrass Transit Authority (SEARP&DC)

Proposed Work

- Continue work with Wiregrass Transit Authority (SEARP&DC)
- Complete Human Services Transportation Plan

Product

The Human Services Coordinated Transportation Plan for the Dothan Urbanized Area that identifies transportation disadvantaged population and their travel needs.

Staffing

Metropolitan Planning Section (ALDOT), City of Dothan, MPO, and Southeast Alabama Regional Development & Planning Commission (SEARP&DC) staff.

Schedule

None

Funding Responsibility

Total Cost	\$4,375
PL	\$3,500
Local	\$875

4.4 Public Involvement for Air Quality Conformity

Objectives

Provide information about activities related to air quality conformity to interested individuals, groups and the general public.

Previous Work

No previous work required

Proposed Work

- Development of required programs/plans related to air quality conformity

Product

Complete all public involvement activities required by air quality conformity

Staffing

The City of Dothan and MPO staff

Schedule

None

Activity will be determined by NAAQS announcement.

Funding Responsibility

Total Cost	\$12,500
PL	\$10,000
Local	\$2,500

5.0 Environmental Mitigation and Streamlining

Environmental Mitigation and Streamlining addresses air quality issues not directly related to specific planning documents and the potential mitigation measures from those actions. NAAQS training, emissions monitoring techniques, and public involvement administered by the MPO are specific procedures and measures to provide a successful planning process. Other federal requirements require the integration of climate change and implications of the effects of green house gases (GHG) to be included in the transportation planning process.

5.1 Air Quality

Objectives

The Environmental Protection Agency (EPA) establishes tolerance limits on ground level and atmospheric pollutant concentrations through enactment of the National Ambient Air Quality Standards (NAAQS). An Air Quality plan is required for planning areas in non-attainment status or those areas anticipating non-attainment. This task provides for those activities that support the overall planning effort that in turn eventually results in Air Quality Conformity Determination actions. The Southeast Wiregrass Area MPO is currently in a non-attainment standing.

Previous Work

Not applicable: there has no previous work required

Proposed Work (when applicable)

- Attend appropriate Air Quality training courses/seminars
- Stay informed of current guidelines and other requirements

Product

When applicable produce appropriate documents, reports or forms.

Staffing

Metropolitan Planning Section (ALDOT) and the City of Dothan

Schedule

When applicable training and reports date(s) will be determined

Funding Responsibility

Total Cost	\$3,750
PL	\$3,000
Local	\$750

5.2 Climate Change and Green House Gases

Objectives

FHWA requires climate change to be integrated into transportation planning at the local state and regional levels. FHWA also requires that the appropriate steps be taken to instruct and train MPO staff in the sources and causes of Green House Gas emissions as well as consider the potential long-range effects by and to the transportation process and network.

Previous Work

Not applicable: there has no previous work required

Proposed Work (when applicable)

- Attend appropriate Climate Change and Green House Gases training courses/seminars
- Stay informed of current guidelines and other requirements

Product

When applicable produce appropriate documents, reports, and forms.

Staffing

Metropolitan Planning Section (ALDOT) and the City of Dothan

Schedule

When applicable training and reports date(s) will be determined

Funding Responsibility

Total Cost	\$3,750
PL	\$3,000
Local	\$750

6.0 Transportation Systems

6.1 Long Range Transportation Plan (LRTP)

Objective

Maintain updated Long Range Transportation Plan (LRTP). Work with the FHWA, FTA, ALDOT and local governments to implement the 2035 Long Range Transportation Plan updates. MPO Staff will monitor efforts to implement the 2035 LRTP updates and continue to promote the development of a link connecting Dothan and Southeast Alabama to the interstate highway system. Facilitate the construction of bicycle paths and pedestrian walkways, where appropriate. Work with transportation providers to improve coordination between highways, railroads, waterways, airports, and other transportation modes. Work with ALDOT to implement statewide transportation plan.

Previous Work

The MPO Staff and the MPO member governments and organizations continues to work with ALDOT, members of Alabama congressional delegation and members of the Wiregrass Area Legislative delegation to support a proposed link to the interstate highway system. The MPO and its member governments implemented numerous projects that improved safety throughout the network. These included signalization projects, intersection improvements, and turn lanes. Jacobs Engineering was selected as the Long Range Transportation Plan update consultant. The Long Range Transportation Plan update was completed in the summer of 2010.

Proposed Work

The MPO staff will work with ALDOT, member MPO agencies and governments, FHWA and FTA to ensure that the Long Range Transportation update is implemented in coordination with the statewide transportation plan. The MPO will continue to work with local, State, and Federal officials to promote a limited access connector to the interstate highway system. In implementing the transportation plan, the MPO will minimize adverse impacts on the environment. The communities comprising the MPO will take into account the objectives of the transportation plan, including the need to preserve transportation corridors and promote multimodal coordination in their land use policies. Copies of the adopted Long Range Transportation Plan updates are made available to MPO member organizations and the public in “hard copy” as well as on the MPO web site.

The MPO, in cooperation with ALDOT and FHWA, will continually monitor the progress of the implementation of the Plan as well as its effectiveness in addressing the transportation needs of the Southeast Wiregrass Area.

- Maintain the Long Range Transportation Plan Updates
- Implement and monitor the LRTP projects
- Utilize Dothan Fixed Route Study
- Completion of the Bicycle & Pedestrian Plan
- Completion of the ITS Plan

Product

The 2035 Long Range Transportation Plan update will provide a guide for meeting the transportation needs in the Southeast Wiregrass Area for the next twenty-five years within the context of the anticipated available funding, while the Dothan Fixed Route Transit Evaluation and Bicycle Pedestrian Plan will provide guidance to determine the feasibility to implementation. The ITS Plan will improve traffic management, incident response, coordination of emergency management, dissemination of basic traveler information during incidents and general data collection.

Staffing

Metropolitan Planning Section (ALDOT) and 7th Division (ALDOT), the City of Dothan and a consultant.

Schedule

The Final LRTP update was adopted in the summer of 2010. The Dothan Fixed Route Evaluation was completed in the spring of 2010. The Bicycle Pedestrian Plan consultant selection began in the spring of 2010 and was completed In the fall of 2010.

Funding Responsibility

Total Cost	\$6,250
PL	\$5,000
Local	\$1,250

6.1.1 Air Quality Conformity Report

Objectives

To ensure all federal air quality reporting as it relates to the Long Range Transportation Plan (LRTP) will be incorporated in the document

Previous Work

Not applicable: there has been no previous work.

Proposed Work (when applicable)

- Maintain awareness of current and impending air quality standards
- Stay informed of current guidelines and other requirements
- Prepare document entitled *Air Quality Conformity Report for the Dothan Urbanized Area and the Counties of Dale, Henry, and Houston in Alabama.*

Product

Air Quality Conformity Report for the Dothan Urbanized Area and the Counties of Dale, Henry, and Houston in Alabama.

Staffing

The City of Dothan, MPO Staff and a consultant (if necessary)

Schedule

Report date(s) will be determined by NAAQS announcement.

Funding Responsibility

Total Cost	\$6,250
PL	\$5,000
Local	\$1,250

6.1.2 Amend Long Range Project Listing for Air Quality Conformity

Objectives

To ensure the present air quality status is reflected in the Long Range Transportation Plan (LRTP) project listings.

Previous Work

Not applicable: there has been no previous work.

Proposed Work (when applicable)

- Amend Long Range project listings to reflect the demonstration of conformity provided in the Air Quality Conformity Report.

Product

Amended Long Range Transportation Plan for the Dothan Urbanized Area and the Counties of Dale, Henry, and Houston in Alabama for Air Quality Conformity-Project Listings Only.

Staffing

The City of Dothan and the MPO Staff

Schedule

Report date(s) will be determined by NAAQS announcement.

Funding Responsibility

Total Cost	\$6,250
PL	\$5,000
Local	\$1,250

6.2 Transportation Improvement Program (TIP)

Objective

Identify transportation system improvements to be recommended for advancement during successive four-year program periods, including realistic estimates of cost and revenue. Support the development of public transit service in the Dothan Urbanized Area by identifying funded transportation system improvements.

Monitor the implementation of the Transportation Improvement Plan (TIP) during the “interim” years, including progress of projects, potential changes in project costs and scheduling. Evaluate effectiveness of the completed projects in achieving the goals of the Long Range Transportation Plan.

Work with ALDOT and local officials to advance transportation projects and develop the funded short-range TIP.

Previous Work

During early FY 2011, the FY 2008 – 2011 TIP was amended to add several local projects as well as projects requested by ALDOT. The rebalanced/updated TIP is adopted on a yearly schedule.

Proposed Work

The draft FY2012-15 will be developed by the MPO planning staff and the TAC under the direction of the MPO and in cooperation with ALDOT. Based upon ALDOT's estimates of costs and funding available for transportation projects, the MPO will select transportation improvement projects for advancement. Non-federally funded projects that advance the transportation plan will also be identified. Future TIPs will take into account the 2035 Long Range Transportation Plan, federal legislative requirements and the need for a fiscally realistic TIP. The MPO will consider amendments to the FY 2008 – 2011 or the FY 2012-15 TIP if new federal legislation significantly changes the funding available for TIP projects. Designation and design of projects will take into account the life cycle cost of those projects both in terms of construction and maintenance and in savings to motorists in terms of congestion relief and reduced travel time. Any amendments to the TIP will require re-establishment of Financial Constraint.

The MPO will continue to provide opportunities for the citizenry to be involved in the identification and proposed phasing of projects. In evaluating and designing possible projects, the MPO will attempt to promote efficient coordination among the various transportation modes and facilities.

The draft of the FY 2012 - 2015 TIP will be completed and forwarded to ALDOT and FHWA.

- Manage updates to the Transportation Improvement Plan
- Monitor funding availability of the TIP
- Produce TIP amendments as needed
- Produce the FY2012-15 TIP

Product

The Draft and Final FY 2012-15 Transportation Improvement Program. A four-year TIP updated as needed, which meets the Southeast Wiregrass Area's transportation needs and the requirements of federal legislation while implementing the 2035 Long Range Transportation Plan.

Staffing

Metropolitan Planning Section (ALDOT) and the City of Dothan

Schedule

Report date(s) will be determined by ALDOT

Funding Responsibility

Total Cost	\$25,000
PL	\$20,000
Local	\$5,000

6.2.1 Amend FY 2012-15 TIP Project Listing for Air Quality Conformity

Objectives

To ensure the present air quality status is reflected in the Transportation Improvement Program (TIP) project listings.

Previous Work

Not applicable: there has been no previous work.

Proposed Work (when applicable)

- Amend the existing TIP to reflect the demonstration of conformity provided in the Air Quality Conformity Report.

Product

Amended FY 2012-15 Transportation Improvement Program for the Dothan Urbanized Area-Project Listings Only.

Staffing

The City of Dothan, MPO Staff

Schedule

Report dates will be determined by NAAQS announcement.

Funding Responsibility

Total Cost	\$6,250
PL	\$5,000
Local	\$1,250

6.3 Public Transportation

Objectives

Make available Section 5303 funds for the Southeast Alabama Regional Planning and Development Commission (SEARPDC) /Wiregrass Transit Authority to address applicable FTA areas of emphasis not specifically addressed in the UPWP. These planning areas include financial, safety/alcohol-drug control study, ADA, Clean Air, DBE, competitive contracting, maximizing private participation in providing transportation. Assist in collection and maintenance of information to improve the efficiency of scheduling, dispatching, and routing transit vehicles. Enable MPO staff to monitor SEARPDC/Wiregrass Transit Authority service. Work with SEARPDC/Wiregrass Transit Authority and potential customers to develop a rider base. Consider possible expansion of public transportation service into adjacent counties. To ensure the most efficient use of transit vehicles, a selected consultant will conduct a transit study.

Previous Work

SEARPDC, in cooperation with Houston County, The City of Dothan, and the MPO, developed a plan to reestablish public transit service in Dothan and Houston County. MPO staff worked with SEARPDC and service agencies to develop contracts. Wiregrass Transit Authority, under the auspices of SEARPDC, initiated service in FY 1994. The Southeast Wiregrass Area MPO requested concurrence from ALDOT to engage in the consultant selection process to provide professional services for the Dothan Fixed Route Transit Study in April 2008. Request for Proposals were mail to ALDOT pre-qualified consultants in June 2008. A consultant was selected to provide professional services for the Dothan Fixed Route Transit Study in August 2008. MPO staff requested approval to enter into negotiations with the selected consultant in August 2008. The Dothan Fixed Route Transit Study was completed in May 2010.

Proposed Work

SEARPDC/Wiregrass Transit Authority will be responsible for short-range transit planning. MPO staff will incorporate public transit into the Long Range Transportation Plan. Staff will make possible the procurement of software to model and analyze transit needs in order to optimize scheduling, dispatching, and routing. Wiregrass Transit Authority and MPO staffs will be available to work with neighboring county officials to determine the financial and logistical practicality of expanding service into neighboring counties. MPO staff will work with Wiregrass Transit Authority and social service agencies to identify needs of clients.

- Create more awareness of the Dothan Fixed Route Transit Feasibility Study
- Increase communication with Wiregrass Transit Authority

Product

An on-going public transit planning program that addresses areas of emphasis identified by FTA by providing convenient and safe public transit service, and evaluating potential improvements in scheduling, service and coverage. A transit planning program that places a priority on service to residents without convenient access to personal automobiles or other private transportation. Staff will prepare a Transit study/ report to address transit needs and effectiveness.

Staffing

The City of Dothan, SEARPDC and consultant

Schedule

None

[The Dothan Fixed Route Transit Evaluation was completed in May 2010]

Funding Responsibility

Total Cost	\$6,250
PL	\$5,000
Local	\$1,250

6.3.1 Private Enterprise Participation

Objectives

Enhance opportunities for the private sector to participate in the planning process and increase opportunities for the private sector to provide services. Work with Wiregrass Transit Authority to increase private sector participation in the provision of transit services.

Previous Work

MPO staff participated in available workshops offered by ALDOT and Alabama Transit Association. A private sector participation plan was prepared for the public transit system by MPO staff and adopted by the MPO. Funds have been made available to enable a local taxi company to make a company vehicle handicap-accessible in order to make taxi service available to handicapped citizens. A local taxi service operator is a member of the Technical Advisory Committee.

Proposed Work

ALDOT will monitor the efforts of the planning agency (MPO), and the City of Dothan, in its efforts to involve private sector firms in its transportation planning activities and increase opportunities for such firms to provide transportation services. MPO staff will provide assistance to Wiregrass Transit Authority, as needed, to encourage participation by private companies providing transportation services.

- Attend workshops offered by ALDOT
- Continue to post transportation planning activities (Internet, print media)
- Contact private organization, when appropriate, and advise of specific transportation planning activities

Product

A program that involves private sector participation in the transportation planning program, including the transit program.

Staffing

The City of Dothan, SEARPCD

Schedule

None

Funding Responsibility

Total Cost	\$6,250
PL	\$5,000
Local	\$1,250

6.4 Bicycle/Pedestrian Trans Planning

Objectives

Develop a new Bicycle and Pedestrian Transportation Plan for the Dothan Urban Area. Work with ALDOT and other appropriate agencies to promote the Safe Routes to School Program.

Previous Work

MPO staff worked with City of Dothan, Houston County, Dothan Area Chamber of Commerce, and local bicycle clubs to develop a bicycle plan for the Dothan area. MPO staff identified roads and streets suitable for development as a bicycle network. Staff and consultant also created maps to illustrate the proposed bicycle route system. The Southeast Wiregrass Area MPO amended the FY2011 UPWP during its March MPO meeting to fund a Bicycle/Pedestrian Plan. After receiving concurrence from the Alabama Department of Transportation (ALDOT) to proceed with the consultant selection process, staff organized a consultant selection committee. To ensure compliance of ALDOT's consultant selection procedures, staff selected firms from the Pre-Qualified consultant list to send out a Request for Proposals (RFP). After receiving and reviewing RFPs, Neel-Schaffer was selected as the Bicycle and Pedestrian Plan consultant. City of Dothan and MPO staff started the Bicycle and Pedestrian Plan consultant selection process in the winter of 2010 and anticipates completion of the plan by the fall of 2011.

Proposed Work

Staff will work with Dothan Bicycle Club, City of Dothan Leisure Services Department, area law enforcement agencies, Dothan Area Chamber of Commerce, and other appropriate organizations and individuals to identify existing barriers to bicyclists and evaluate suitability of streets and roads for bicycle use. Identify streets and roads suitable for bicycle use and where functionally and financially feasible, to include pedestrian and bicycle facilities, where appropriate and feasible, in the construction of new transportation facilities. A consultant will be sought out to assist the City of Dothan in development of a new bicycle transportation plan.

- Initiate possible Bicycle and Pedestrian Plan phases for the Greater Dothan Area
- Research funding sources

Product

Incorporation into the future 2035 Long Range Transportation Plan updates of a map identifying streets and roads in the Dothan Urban Area suitable for bicycle use. An ongoing planning program to reduce barriers to bicycle use, develop traffic regulations promoting bicycle use and utilize available funds to develop a bicycle network.

Staffing

City of Dothan ALDOT and a consultant

Schedule

The Bicycle and Pedestrian Plan completion date is scheduled for the fall of 2010.

Funding Responsibility

Total Cost	\$6,250
PL	\$5,000
Local	\$1,250

6.5 Congestion Management Process

Objectives

Program to minimize and reduce delay and other adverse impacts of congestion by maximizing the operating efficiency of existing transportation facilities.

Previous Work

MPO staff worked with ALDOT to increase operating efficiency of intersections in the planning area and to identify sources of congestion. MPO staff worked with SEARPCD and local elected officials to reestablish a public transit system. The MPO has emphasized TSM projects, such as intersection improvements, to improve efficiency of existing facilities. MPO staff also worked with ALDOT to improve effectiveness of signal systems to improve intersection performance. City of Dothan Traffic Engineering Services division implemented with local funds an updated computerized closed loop traffic signal system to optimize local signal operations using City funding.

Proposed Work

Staff will conduct transportation engineering to analyze local traffic conditions and optimize operation of existing system. All work in support of this task will be performed in conformance with established metropolitan planning requirements and procedures. City of Dothan will continue the development of its closed loop signal system. Work with ALDOT in evaluating existing transit service and other programs to determine their effectiveness in reducing travel demand. Through ALDOT, maintain an ongoing program to investigate travel demand reduction methods used by other small MPOs. Assist Wiregrass Transit Authority's efforts to increase number of area residents using public transportation. Make available MPO staff resources to major employers desiring to explore possible methods to reduce employee commuter trips during peak periods.

- Utilize CUBE Voyager to analyze traffic volume changes
- Update network model to reflect how new projects relate to traffic volumes and pattern changes
- Analyze, with the City of Dothan Traffic Engineer, the effectiveness of the current signal system

Product

An ongoing program that reduces traffic congestion, thereby reducing delay, pollution, accidents and other consequences of congestion.

Staffing

Metropolitan Planning Section (ALDOT) and the City of Dothan

Schedule

No CMP Plan required.

Funding Responsibility

Total Cost	\$6,250
PL	\$5,000
Local	\$1,250

6.6 Freight Planning

Objectives

Develop a program to employ components of future freight transportation demands in the transportation planning process. The proposed Freight Plan will cover all applicable modes of transportation; ground (rail, truck), water (river) and air (planes).

Previous Work

None

Proposed Work

- Research existing Freight Planning activities
- Incorporate proposed freight planning element in appropriate document
- Develop required freight planning documents

Product

Development of Freight Plan guidelines

Staffing

Metropolitan Planning Section (ALDOT) and the City of Dothan

Schedule

None

Funding Responsibility

Total Cost	\$6,250
PL	\$5,000
Local	\$1,250

7.0 Transportation Safety

Objective

Continue to incorporate transportation safety and security in the MPO transportation planning process.

Previous Work

MPO staff collected accident data and traffic counts from local MPO members. MPO staff discussed and identified projects for signal replacement, intersection improvements, striping and additional lighting.

Proposed Work

- Identify High accident locations
- Develop maps and reports concerning safety issues
- Identify bicycle and pedestrian movement to improve safety
- Apply to SRTS Program

Product

A transportation planning process that identifies safety issues. MPO Staff will also produce maps and reports concerning high accident locations and other transportation safety and security concerns. Staff will also attend training and workshops.

Staffing

MPO Staff, and City of Dothan staff.

Schedule

None

Funding Responsibility

Total Cost	\$6,250
PL	\$5,000
Local	\$1,250

8.0 Education and Training

Objective

Maintain on-going training program for members of the professional staff responsible for the Southeast Wiregrass Area transportation planning program.

Previous Work

MPO staff members have attended workshops presented by the APA, ATPA, FHWA and ALDOT covering topics pertinent to the transportation planning profession, including use of traffic demand models, congestion management, safety, environmental justice and other topics. MPO staff maintains a library of books, articles and other publications. The MPO continues to attend CUBE/Voyager and MOVES 2010 training.

Proposed Work

The MPO will continue to attend workshops, training sessions and seminars that feature transportation planning-related subjects and study transportation planning literature in order to increase the local transportation planning capabilities. The MPO staff will receive training on the maintenance and use of the Southeast Wiregrass Area travel demand model from the consultant that prepared the Long Range Transportation Plan updates.

- Attend future CUBE/Voyager training
- Attend Transportation Planning, and Traffic Demand Modeling related trainings
- Attend Transportation Planning Related Workshops
- Attend MOVES 2010 training

Product

Improve and maintain transportation planning skills of the MPO staff so that transportation planning will meet area transportation needs and address requirements of federal legislation.

Staffing

The City of Dothan and federal, state, and consultant training staff.

Schedule

ALDOT sponsored CUBE Voyager are scheduled quarterly while other training dates and times are unknown.

Funding Responsibility

Total Cost	\$14,046
PL	\$11,237
Local	\$2,809

9.0 Special Projects, Corridor Development, and Developments of Regional Impact (DRI)

Objectives

Evaluate the impact of commercial, industrial, residential, and institutional developments on the transportation system. Evaluate existing transportation facilities in order to identify deficiencies and develop non-capital intensive solutions in an effort to improve the effectiveness of the existing transportation system. Assist developers, subdividers, and others to design developments with minimal impact on the transportation system. Advise local authorities on cost-effective measures to be taken to alleviate traffic problems and mitigate adverse impacts of development on the transportation system. Help assure that developments complement the transportation plan.

Previous Work

MPO staff reviewed major developments in the Dothan area to evaluate potential impacts on transportation systems as well as consistency with the Long Range Transportation Plan, the TIP and other transportation planning documents. The MPO staff advised the Planning Commission, developers, and public officials on steps to minimize adverse impacts on the transportation system. Staff also advised developers on the effects that the implementation of the Long Range Transportation Plan and TIP, including plans for Ross Clark Circle and U.S. 231 North corridor improvements might have on their developments. In association with ALDOT officials, the MPO staff reviewed traffic studies and access plans for planned major developments along major transportation facilities, including portions of U. S. 84, U. S. 231 and Ala. Highway 210 (Ross Clark Circle). The MPO staff worked with potential developers of neighboring developments to “coordinate” planned improvements and mitigation strategies. Staff continues to work with economic development interests in the urban area to ensure that an adequate transportation system exists for the implementation of economic development projects, including use of the State of Alabama’s Industrial Access program.

Proposed Work

Traffic counts, turning movement counts, traffic generation tables, on-site inspections, and negotiations with developers are methods that have been used in the past and will continue to be used to anticipate development impact on the transportation system and determine the most appropriate mitigation measures. Signalization optimization programs and other traffic operations software will be used to assist developers in the critical movement analysis and signal phasing. MPO staff will continue to work with developers and property owners to develop measures to best accommodate access to the transportation system and will recommend such measures to the City of Dothan Planning Commission. MPO staff will receive training in conjunction with updates to the Long Range Transportation Plan to enhance its ability to predict traffic likely to be generated

by proposed developments. Staff will work with Southeast Alabama Regional Planning and Development Commission (SEARPDC) in an effort to ensure that new developments can be effectively served by public transit.

- Coordinate with appropriate municipal, county and state personnel on major developments to evaluate the potential impact on the area
- Continue to evaluate current roadways to identify areas of deficiencies
- Work with the appropriate municipal, county and state personnel to evaluate how a new commercial/residential development design will impact the transportation system

Products

Reports, presentations to interested parties, and outreach events as directed or requested by senior MPO Staff.

Staffing

The City of Dothan

Schedule

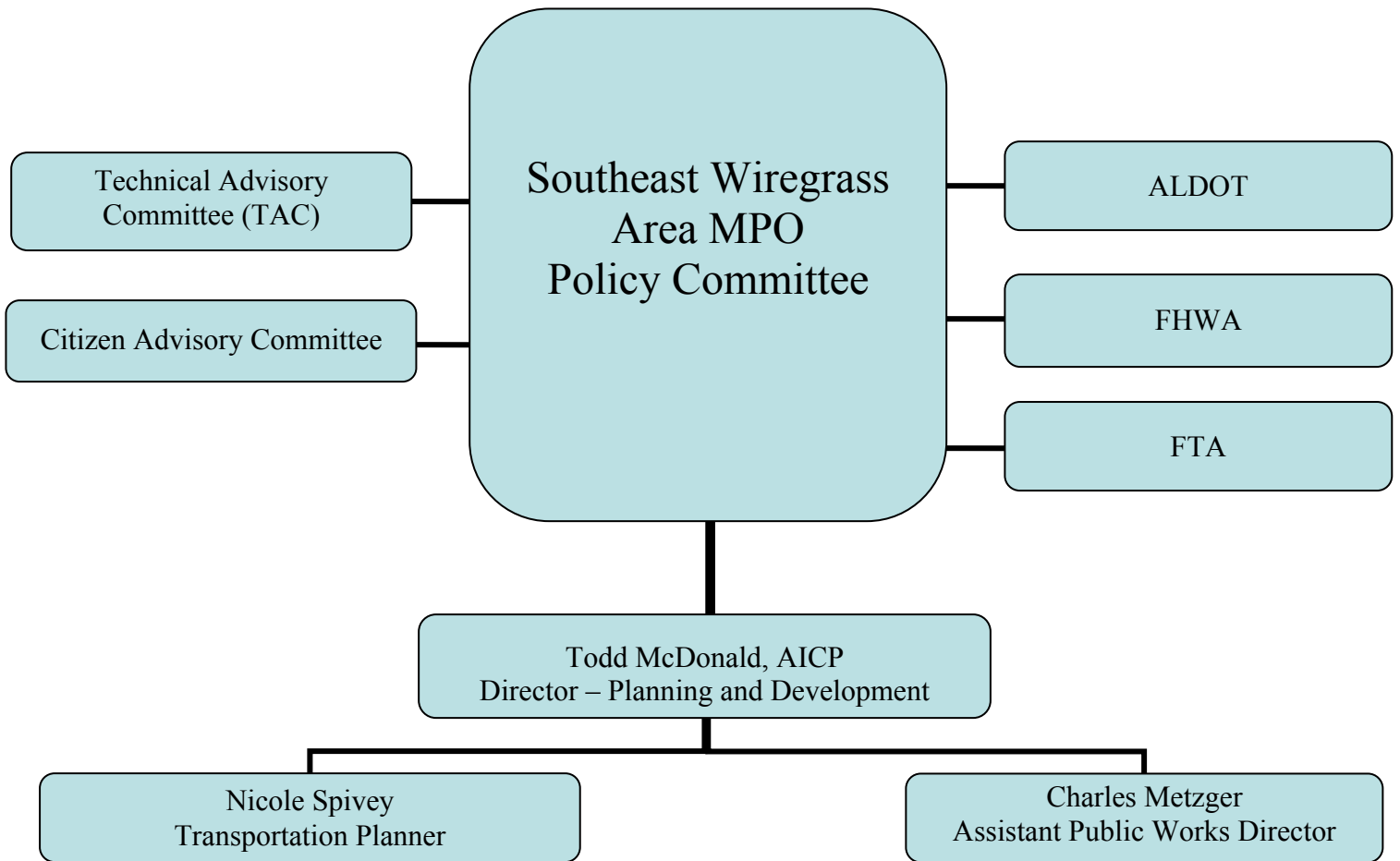
There are currently no known dates and times.

Funding Responsibility

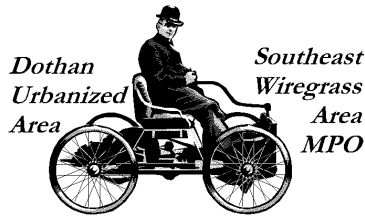
Total Cost	\$12,500
PL	\$10,000
Local	\$2,500

Appendices

Appendix B MPO Organizational Chart



Appendix C Public Participation Plan



PUBLIC PARTICIPATION AND ENVIRONMENTAL JUSTICE PLAN

FOR THE

SOUTHEAST WIREGRASS AREA METROPOLITAN PLANNING ORGANIZATION

Introduction

The Southeast Wiregrass Area Metropolitan Planning Organization (MPO) is an organization designated by agreement between the Governor of the State of Alabama and units of general purpose local government in this area that together represent least 75 percent of the affected population (including the largest incorporated city (based on population) as named by the Bureau of the Census). Its purpose is to carry out a metropolitan transportation planning process as required by the federal government in order to facilitate the distribution of federal funds. An MPO is designated for each urbanized area with a population of more than 50,000 individuals.

The MPO is composed of local elected officials; officials of public agencies that administer operate major modes of transportation in the metropolitan area; and appropriate State officials.

The purpose of this participation plan is to outline the process, which the Wiregrass MPO will use to involve the public in the transportation planning process. This plan shall provide for the consideration of projects and strategies that will:

- 1) support the economic vitality of the metropolitan area, especially by enabling global competitiveness, productivity, and efficiency;
- 2) increase the safety of the transportation system for motorized and non-motorized users;
- 3) increase the security of the transportation system for motorized and non-motorized users;
- 4) increase the accessibility and mobility of people and for freight;
- 5) protect and enhance the environment, promote energy conservation, improve the quality of life, and promote consistency between transportation improvements and State and local planned growth and economic development patterns;
- 6) enhance the integration and connectivity of the transportation system, across and between modes, for people and freight;
- 7) promote efficient system management and operation; and
- 8) emphasize the preservation of the existing transportation system.

1) Authority

- a) The SAFE, ACCOUNTABLE, FLEXIBLE, EFFICIENT, TRANSPORTATION EQUITY ACT: A LEGACY FOR USERS (SAFETEA-LU) was approved on August 10, 2005. It is codified under the Federal Highway Administration as 23 CFR 450.316 on February 17, 2007.
- b) SAFETEA-LU requires that the metropolitan transportation planning process be continuous, cooperative and comprehensive.
- c) SAFETEA-LU requires that metropolitan planning organizations provide citizens, affected public agencies, representatives of public transportation employees, freight shippers, providers of freight transportation services, private providers of transportation, representatives of users of public transportation, representatives of users of pedestrian walkways and bicycle transportation facilities, representatives of the disabled, and other interested with a reasonable opportunity to comment on the transportation plan.

2) As part of the transportation planning process, the Southeast Wiregrass Area Metropolitan Planning Organization (MPO) will:

- a) Provide opportunities for the public to participate in all aspects of transportation planning decision-making process.
- b) Be inclusive of all citizens regardless of race, religion, color, sex, national origin or physical handicap.
- c) Provide access to information regarding the plans, programs, procedures, policies and data collected by the MPO
- d) Seek to insure that notice of all Wiregrass MPO activities are disseminated to the public in a timely manner
- e) Assure that no individual or group will experience disproportionately adverse impacts as a result of the transportation planning process or the implementation of any plans resulting from the transportation planning process.
- f) Consult as appropriate, with State and local agencies responsible for land use management, natural resources, environmental protection, conservation, and historic preservation concerning the development of a long-range transportation plan.
- g) Coordinate public involvement activities with statewide transportation planning public involvement and consultations processes conducted by the Alabama Department of Transportation.

3) Participation by Interested Parties

- a) In General, SAFETEA-LU requires that each metropolitan planning organization provide citizens, affected public agencies, representatives of public transportation employees, freight shippers, providers of freight services, private providers of transportation, representatives of users of public transportation, representatives of users of pedestrian walkways and bicycle transportation facilities, representatives of the disabled, and other interested parties with a reasonable opportunity to comment on the transportation plan.
- b) A participation plan shall be developed in consultation with all interested parties; and shall provide all interested parties with a reasonable opportunity to comment on the contents of the transportation plan. To the maximum extent practicable, methods available to achieve participation include:
 - i) Holding public meetings at convenient and accessible locations and times;
 - ii) Apply visualization techniques to plans;
 - iii) Make revisions to public involvement plan available for public comment 45 calendar days shall before the initial or revised participation plan is adopted by the MPO;
 - iv) Transportation planning documents shall be made available in an electronically accessible format and means, such as the World Wide Web.

4) Public Involvement Strategies. The Wiregrass MPO distributes printed material to the primary mechanism to communicate to and involve the public in the transportation planning process. But since public involvement is a continuous process, several other means of communication will be used to encourage public participation including press releases, postings on the website and direct communication with the press.

a) Make Documents Available to the Public

- i) The following documents are available for public review during regular business hours, 8:00 am to 5:00 pm:
 - (1) Meeting agendas and minutes;
 - (2) Long Range Transportation Plan;
 - (3) Transportation Improvement Plan (TIP);
 - (4) Unified Planning Work Program (UPWP);
 - (5) Payment invoices;
 - (6) Semi-annual reports;
 - (7) Maps;
 - (8) Construction plans for approved projects;
 - (9) Other documents related to MPO activities;
 - (10) Records and documents are located in the office of the Department

of Planning and Development, Room 305, Dothan Municipal Building, 126 North St. Andrews Street, Dothan AL 36303. Phone: (334) 615-4410. FAX: (334) 615-4419. Materials may be copied or duplicated for a nominal charge.

b) Make MPO Staff Available to the Public. The MPO staff is available during normal office hours to provide assistance in reviewing documents and answering questions about the transportation planning program. MPO staff is available to assist the public and media with contacting the Alabama Department of Transportation and the U. S. Department of Transportation.

(1) The MPO staff is available to speak to interested civic, professional, and other groups about the transportation planning program.

c) Communicate with the Media

i) The MPO staff will work with local mainstream and minority media to disseminate information about the transportation planning program and the activities of the MPO.

ii) The MPO staff will provide local news media copies of MPO materials, including: meeting announcements, proposed plans and meeting agendas.

iii) The local media will be encouraged to publicize MPO meetings and activities through public service announcements and news articles. The MPO staff will accommodate and assist the media in their efforts.

d) Maintain an Internet Presence. The Wiregrass MPO will post meeting announcements and key work products on the worldwide web. The City of Dothan provides staff support to the MPO which extends to the cities webpage at www.dothan.org. Efforts are made to make navigation to posted information as easy as possible.

e) Conduct Public Involvement Meetings.

i) Public involvement meetings will be held before the formal consideration of the following transportation planning activities:

(1) Updates to the Long Range Transportation Plan (LRTP). The Long Range Transportation Plan is the policy document adopted by the MPO outlining anticipated projects over a twenty year period.

- (2) Amendments to the Transportation Improvement Program (TIP). The Transportation Improvement Program is a listing of the projects advanced by MPO members for funding through a variety of programs
 - (3) Unified Planning Work Program (UPWP). The Unified Planning Work Program is an annual document identifying transportation planning activities, schedule and budget to for the coming year.
 - (4) Public Involvement Plan (PIP). The Public Involvement Plan outlines the steps the MPO takes to ensure the public has an opportunity to participate in the decision making process.
 - (5) Additional opportunities for public comment will be provided if a long-range transportation plan or Transportation Improvement Program varies significantly from the version that was initially made available for public comment.
 - (6) Other major transportation planning activities. The purpose of these meetings is to provide the public the opportunity to ask questions about a transportation planning issue.
- ii) Location: Public involvement meetings will be held in City of Dothan Commission Chambers unless otherwise advertised at times convenient to the public at large.
 - iii) Format: Public involvement meetings will generally have an open house format. The MPO staff will be available to answer questions from attendees. Attendees will be able to make oral or written comments. The MPO staff will make available materials to assist the public in understanding and evaluating the transportation planning program. On occasion, more formal formats may be used for public involvement meetings. The meeting time, date and location shall be publicized two (2) weeks in advance.
 - iv) Publicity: Public meetings will be advertised in The Dothan Eagle in the legal section and as a display ad. Public notices will be posted at the Dothan Civic Center and the Houston-Love Memorial Library. Public notices will be sent to MPO member governments and requested to post the notice in a public place. Local media will be encouraged to publicize meetings in articles, news reports and public service announcements.
- f) Provide Support to Standing Committees.** Meetings of MPO standing committees will be open to the public and media in accordance with the Alabama Open Meetings Act No 2005-40. Meetings shall be held at least quarterly.
- i) Policy Board: Members of the Policy Board are the chief elected officials (Mayor's and County Commission Chairman) of the following local government jurisdictions and as such, represent their constituents in the

process. Member of the MPO Policy Board are:

- (1) Town of Ashford
- (2) City of Dothan
- (3) Town of Grimes
- (4) Town of Headland
- (5) Town of Kinsey
- (6) Town of Midland City
- (7) Town of Napier Field
- (8) Town of Pickard
- (9) Town of Taylor
- (10) Town of Webb
- (11) Dale County
- (12) Henry County
- (13) Houston County
- (14) ALDOT Division Engineer
- (15) ALDOT Transportation Planning Engineer (NV)
- (16) Division Administrator, FHWA (NV)
- (17) Exec. Director, Southeast Alabama Regional Planning and Development Commission (NV)

(NV – non voting)

ii) Technical Advisory Committee: Members of the Technical Advisory Committee are non-elected officials developing transportation infrastructure or operating transportation dependent businesses. Members of the TAC are:

- (1) Mr. Mark Nall, AAA Cab Co.
- (2) Mr. Jimmy Barkley, AAA Cooper Transportation Co.
- (3) Mr. Mark Pool, Houston County Engineer
- (4) Mr. Myer Holloway, Houston County Roads and Bridge Department
- (5) Mr. Justin Barfield, Houston County Roads and Bridge Department
- (6) Mr. Jerry Corbin, Public Works Director, City of Dothan
- (7) Mr. Charles Metzger, Traffic Engineer, City of Dothan
- (8) Mr. Ernest Stokes, Chief Civil Engineer, City of Dothan
- (9) Mr. Alan Kramer, Engineering Services Manager, City of Dothan
- (10) Mr. Robert Cox, Assistant Traffic Engineer.
- (11) Mr. Todd McDonald, Planning Director, City of Dothan
- (12) Ms. Nicole Spivey, Transportation Planner, City of Dothan
- (13) Mr. Derek Brewer, Dale County Engineering Department
- (14) Mr. Chris Champion, Henry County Engineer
- (15) Chair of the Citizen's Advisory Committee
- (16) Mr. Art Morris, Dothan-Houston County Airport Authority
- (17) Mr. David Harris, Planning Programs Mgr., Federal Highway Administration
- (18) Mr. Kenneth Whaley, Alabama Department of Transportation

- (19) Mr. Tim Hornsby, Pre-Construction Engineer, Alabama Department of Transportation
- (20) Mr. Bill Couch, Transportation Planning Bureau, Alabama Department of Transportation
- (21) Mr. Will Adams, Design Bureau, Alabama Department of Transportation
- (22) Mr. Emmanuel C. Oranika, PhD, Bureau of Transportation and Modal Programs, Alabama Department of Transportation
- (23) Mr. Wiley Brooks, Sr. Transportation Planner, Bureau of Transportation and Modal Programs, Alabama Department of Transportation
- (24) Mr. Scott Farmer, Southeast Regional Planning and Development Commission
- (25) Mr. John Sorrell, Wiregrass Transit Authority
- (26) Mr. Charles Peters, Peters Municipal Associates
- (27) Mr. Matt Parker, *Dothan Area Chamber of Commerce*

iii) Citizens Advisory Committee: The Southeast Wiregrass MPO resolved on June 14, 1993 to establish a Citizen Advisory Committee to provide input into the public involvement process. Each MPO member is charged with appointing one representative each with exception of Houston County and the City of Dothan which each have two. The MPO staff provides technical and administrative support and has the authority to make recommendations to the MPO. The chair of the Citizens Advisory Committee is a non-voting member of the technical Advisory Committee.

5) Review of Effectiveness

- i) On-going Evaluation. As mandated in Executive Order 12898, the Wiregrass MPO will evaluate the effectiveness of its Public Involvement and Environmental Justice strategies and practices on an on-going basis to ensure that low income and minority population classes are not adversely impacted by the implementation of transportation plans or programs. As part of this evaluation process, the MPO will solicit comments and suggestions from the public on the effectiveness of those strategies and practices and how they could be improved or supplemented by other methods.
- ii) Revisions and Amendments. At least every two years, the Public Participation and Environmental Justice Plan will be reviewed to ensure that appropriate changes are being made. This shall not preclude the MPO from making changes prior to the biennial review if it is determined that changes are needed to improve the effectiveness of the Plan.

Appendix D Abbreviations and Acronyms

3-C	Comprehensive, Cooperative, and Continuing
ADA	Americans with Disabilities Act
ALDOT	Alabama Department of Transportation
APA	American Planning Association
ATPA	Alabama Transportation Planning Association
ATS	ALDOT Technical Services
CAD	Computer Aided Design
COOP	Continuity of Operations Plan
DBE	Disadvantaged Business Enterprise
DOT	Department of Transportation
FAS	Federal Aid System
FHWA	Federal Highway Administration
FTA	Federal Transit Administration
GIS	Geographic Information System
L RTP	Long Range Transportation Plan
MPO	Metropolitan Planning Organization
NHS	National Highway System
PL	Planning Funds
SAFETEA-LU	Safe, Accountable, Flexible, Efficient Transportation Equity Act: A Legacy of Users
SEARPDC	Southeast Alabama Regional Planning and Development Commission
SPR	State Planning and Research
TAC	Technical Advisory Committee
TAZ	Traffic Analysis Zone
TEA-21	Transportation Equity Act for the 21 st Century
TIP	Transportation Improvement Program
TSM	Transportation System Management
UPWP	Unified Planning Work Program

Appendix E Financial Constraint Data, Tables, and Reports

Task	PL Funds	Local	Total
1.0 Administration	\$75,000	\$18,750	\$93,750
1.1 COOP Plan	\$5,000	\$1,250	\$6,250
	\$80,000	\$20,000	\$100,000
2.0 Data Collection and Analysis			
2.1 Database maintenance and Data collection	\$10,000	\$2,500	\$12,500
2.2 Geographic Information Systems (GIS)	\$10,000	\$2,500	\$12,500
2.3 Traffic Analysis Zones, traffic models, and traffic count inventories	\$65,000	\$16,250	\$81,250
2.4 Preparation of Emissions Data for MOVES 2010	\$10,000	\$2,500	\$12,500
2.5 Intelligent Transportation System (ITS) Plan *	\$55,000	\$13,750	\$68,750
	\$150,000	\$37,500	\$187,500
3.0 UPWP	\$40,000	\$10,000	\$50,000
4.0 Public Involvement			
4.1 Public Participation Process (PPP) Plan	\$8,500	\$2,125	\$10,625
4.2 Title VI Planning and Environmental Justice	\$9,500	\$2,375	\$11,875
4.3 Disadvantaged Business Enterprise (DBE)	\$3,500	\$875	\$4,375
4.3.1 Transportation Disadvantaged Planning	\$3,500	\$875	\$4,375
4.4 Public Involvement for Air Quality Conformity	\$10,000	\$2,500	\$12,500
	\$35,000	\$8,750	\$43,750
5.0 Environmental Mitigation and Streamlining			
5.1 Air Quality	\$3,000	\$750	\$3,750
5.2 Climate Change and Green House Gases	\$3,000	\$750	\$3,750
	\$6,000	\$1,500	\$7,500

6.0 Transportation Systems			
6.1 Long Range Transportation Plan (LRTP)	\$5,000	\$1,250	\$6,250
6.1.1 Air Quality Conformity Report	\$5,000	\$1,250	\$6,250
6.1.2 Amend Long Range Project Listing for Air Quality Conformity	\$5,000	\$1,250	\$6,250
6.2 Transportation Improvement Program (TIP)	\$20,000	\$5,000	\$25,000
6.2.1 Amend FY2011-15 TIP Project Listings for Air Conformity	\$5,000	\$1,250	\$6,250
6.3 Public Transportation	\$5,000	\$1,250	\$6,250
6.3.1 Private Enterprise Participation	\$5,000	\$1,250	\$6,250
6.4 Bicycle/Pedestrian Trans Planning	\$5,000	\$1,250	\$6,250
6.5 Congestion Management Process	\$5,000	\$1,250	\$6,250
6.6 Freight Plan	\$5,000	\$1,250	\$6,250
	\$65,000	\$16,250	\$81,250
7.0 Transportation Safety	\$5,000	\$1,250	\$6,250
8.0 Education and Training	\$11,237	\$2,809	\$14,046
9.0 Special Projects, Corridor Development, and Developments of Regional Impact (DRI)	\$10,000	\$2,500	\$12,500
TOTAL	\$402,237	\$100,559	\$502,796

* Funding allocated for the Bicycle & Pedestrian Plan
 * Funding allocated for the Intelligent Transportation System (ITS) Plan

TASK	MPO	ALDOT	Consultant	Total
1.0 Administration	\$100,000			\$100,000
2.0 Data Collection and Analysis	\$125,000		\$62,500	\$187,500
3.0 UPWP	\$50,000			\$50,000
4.0 Public Involvement	\$43,750			\$43,750
5.0 Environmental Mitigation and Streamlining	\$7,500			\$7,500
6.0 Transportation Systems	\$75,000		\$6,250	\$81,250
7.0 Transportation Safety	\$6,250			\$6,250
8.0 Education and Training	\$14,046			\$14,046
9.0 Special Projects, Corridor Development, and Developments of Regional Impact (DRI)	\$12,500			\$12,500
SPR		\$125,000		\$125,000
TOTAL	\$434,046	\$125,000	\$68,750	\$627,796

TASK	FY 2012 PL FUNDS			Total Funding By Source			TOTAL
	Federal	Local	Total	FHWA	State	Local	Total
1.0 Administration	\$40,000	\$10,000	\$50,000	\$80,000		\$20,000	\$100,000
2.0 Data Collection and Analysis	\$60,000	\$15,000	\$75,000	\$150,000		\$37,500	\$187,500
3.0 UPWP	\$20,000	\$5,000	\$25,000	\$40,000		\$10,000	\$50,000
4.0 Public Involvement	\$15,000	\$3,750	\$18,750	\$35,000		\$8,750	\$43,750
5.0 Environmental Mitigation and Streamlining	\$6,000	\$1,500	\$7,500	\$6,000		\$1,500	\$7,500
6.0 Transportation Systems	\$35,000	\$8,750	\$43,750	\$65,000		\$16,250	\$81,250
7.0 Transportation Safety	\$5,000	\$1,250	\$6,250	\$5,000		\$1,250	\$6,250
8.0 Education and Training	\$6,237	\$1,559	\$7,796	\$11,237		\$2,809	\$14,046
9.0 Special Projects, Corridor Development, and Developments of Regional Impact (DRI)	\$10,000	\$2,500	\$12,500	\$10,000		\$2,500	\$12,500
SPR				\$100,000	\$25,000		\$125,000
TOTAL	\$197,237	\$49,309	\$246,546	\$502,237	\$25,000	\$100,559	\$627,796

***FHWA Planning Funds and FTA 5303 Funds are consolidated into a single grant.**

* Task 1-4, 6 & 8 include carryover funds from FY 2011

*Task 1 includes \$40,000 Federal Funding, \$10,000 Local Funding totaling \$50,000 FY 11 carryover funds

*Task 2 includes \$90,000 Federal Funding, \$22,500 Local Funding totaling \$112,500 FY 11 carryover funds

*Task 3 includes \$20,000 Federal Funding, \$5,000 Local Funding totaling \$25,000 FY 11 carryover funds

*Task 4 includes \$20,000 Federal Funding, \$5,000 Local Funding totaling \$25,000 FY 11 carryover funds

*Task 6 includes \$30,000 Federal Funding, \$7,500 Local Funding totaling \$37,500 FY 11 carryover funds

*Task 8 includes \$5,000 Federal Funding, \$1,250 Local Funding totaling \$6,250 FY 11 carryover funds

FY 2011 carryover funds will be used to fund MPO Administration Staff, Traffic Counters, UPWP, Public Involvement, Transportation Systems, Consultants and Training.